



SUGANUMA

Company Profile

Name in Full :	Suganuma Co., Ltd.	Head Office:	JRE Omori Station East Exit Building 4F, 1-5-1 Omori-kita, Ota-ku, Tokyo, 143-0016 Japan
Establishment :	December 1, 1939	Telephone:	+81-3-3762-2771
Capital :	96,000,000 JPY	Telefax:	+81-3-3762-2777
President :	Nobuyuki Suganuma	E-mail:	contact@suganuma-ss.co.jp
Employees	76	Website:	https://www.suganuma-ss.co.jp/en/home/
Clients	Japan Railways Group companies Japanese private railways operators TEPCO Tokyo Electric Power Company Holdings, Inc. KEPCO The Kansai Electric Power Co., Inc.		

Providing Services

Since our foundation in 1893, we have been advancing and maintaining the quality of our overhead contact fittings. We manufacture all kinds of products around messenger wires such as Hanger Ear sustaining the trolley wires, steel products/signs attached to Electric poles, etc. We have been working on railway electrification not only in Japan but also in Asia and around the world.

Project Achievement / Technical Expertise

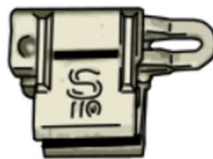
- Strand Line / Myanmar
- Jabotabek Railway / Indonesia
- Vietnam Ho Chi Minh City Railway Line 1 / Vietnam
- Jakarta Urban High-Speed Rail / Indonesia



Hanger Ear Type D



Double Ear

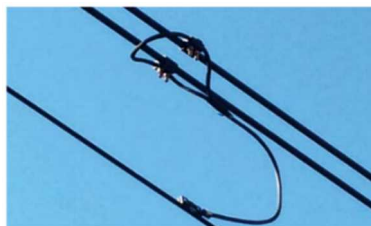


Hanger Ear Type B

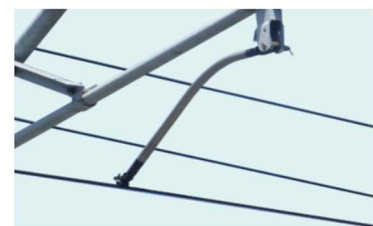


Combination Example:
Hanger Ear + Messenger wire protector

- V truss beam
- Steel pipe mast
- Hinged cantilever
- Drop arm
- Parallel frame steel pipe
- Supporting arm
- Pole band
- Various other steel products



Connector Fitting
(Hollow Screw type, Clamp Ear type)



Pull-off Arm Type Arch

Contact Person

Masanori Ueno, Section Chief for Overseas Sales, Sales Department

E-mail: mu@suganuma-ss.co.jp